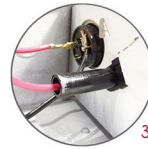
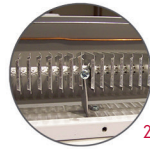
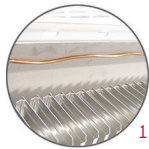
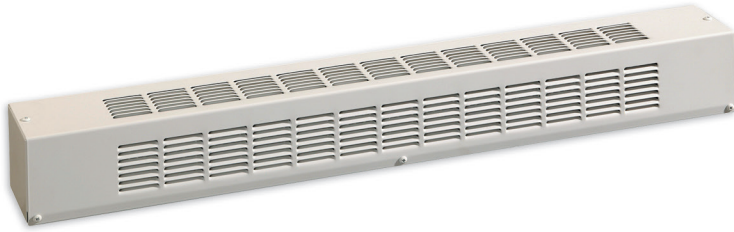


OPP

Patio Door Baseboard Heater



Features

Color

- Standard: white, almond.
- Optional (upcharge applicable): metallic silver, bronze, metallic charcoal, aluminum, semi-gloss black, sand.
- Custom colors available upon request.

Finish

- Standard: epoxy/polyester powder paint.

Voltage

- 208V, 240/208V, 347V, 600V, 1-phase.

Construction

- So sturdy, it can be used as a step (18-gauge steel).
- Linear high-limit temperature control with automatic reset. **1**

Heating element

- Stainless steel tubular heating element with aluminum fins. **2**
- Floating heating element on high-temperature nylon bushings reducing expansion noises. **3**

Watt density

- Average standard watt density of 209W/ft.

Control

- Built-in thermostat available with a control knob or tamperproof (installed on the right end only).
- Mechanical or electronic relays available (installed on the right end only).

Ouellet highly recommends using an electronic wall thermostat for greater comfort.

Installation

- Mounting holes spaced on 2 in. (51 mm) intervals for an easy installation.
- Variety of accessories available for wall-to-wall installation.
- Pedestal kit available.

Warranty

- 3-year warranty against defects.
- 10-year warranty on the heating element.

Application

- Patio door, bay window, commercial building, office building, condo, restaurant.

Average Standard Watt Density Models 209W/ft.

Watts	Product #			Watts 240/208V	Product # 240/208V	Price	Length		Weight	
	208V	347V	600V				in.	mm	lb	kg
500	OPP0508	OPP0507	-	500/375	OPP0500	465.00	33 1/2	855	13.0	5.9
750	OPP0758	OPP0757	OPP0756	750/563	OPP0750	506.00	48	1219	17.0	7.7
1000	OPP1008	OPP1007	OPP1006	1000/750	OPP1000	532.00	60	1525	20.0	9.1
1250	OPP1258	OPP1257	OPP1256	1250/938	OPP1250	631.00	72	1830	26.0	11.8
1500	OPP1508	OPP1507	OPP1506	1500/1125	OPP1500	670.00	86 3/4	2204	31.0	14.1
1750	OPP1758	OPP1757	OPP1756	1750/1313	OPP1750	709.00	100	2542	38.0	17.3
2000	OPP2008	OPP2007	OPP2006	2000/1500	OPP2000	747.00	113 5/16	2879	41.0	18.6

Options

Product # Kit	Product # Factory installed*	Price	Description
-	BD	+10%	Clean back
KIT-OPP-CIBR	-	188.00	Corner (inside and outside), 4 in. (102 mm). Relay section.
KIT-OPP-JT	-	121.00	Splice plate, 2 in. (51 mm)
KIT-OPP-JT-PE	-	188.00	Contour splice plate for heaters with pedestals, 2 in. (51 mm)
KIT-OPP-PE	-	250.00	Round pedestal kit (2), 3 in. (76 mm)
KIT-OPP-PEC	-	250.00	Square-shaped pedestal kit (2), 2 in. (51 mm)
KIT-OPP-R-347 ¹	R ¹	323.00	Single-pole relay, coil 24V, without transformer, 22A at 208V, 240V - 18A at 347V
KIT-OPP-R-600 ¹	R ¹	323.00	Single-pole relay, coil 24V, without transformer, 10A at 600V
KIT-OPP-RT-208 ¹	RT ¹	342.00	Single-pole relay, coil 24V, with transformer 208V/24V, 22A at 208V
KIT-OPP-RT-240 ¹	RT ¹	342.00	Single-pole relay, coil 24V, with transformer 240V/24V, 22A at 240V
KIT-OPP-RT-347 ¹	RT ¹	342.00	Single-pole relay, coil 24V, with transformer 347V/24V, 18A t 347V
KIT-OPP-RT-600 ^{1,2}	RT ^{1,2}	342.00	Single-pole relay, coil 24V, with transformer 600V/24V, 10A at 600V (2-wire only)
OPP-SV-XX	-	Upon Request	Empty cabinet length of XX mm (minimum : 154 mm, maximum : 2879 mm)
KIT-OPP-TB1 ¹	TB1 ¹	266.00	Single-pole thermostat: 30A at 120V, 208V, 240V - 15A at 347V, 600V
KIT-OPP-TB2 ^{1,3}	TB2 ^{1,3}	275.00	Double-pole thermostat: 30A at 120V, 208V, 240V - 15A at 347V, 600V
KIT-OPP-TB1-AV ¹	TB1AV ¹	266.00	Single-pole tamperproof thermostat: 30A at 120V, 208V, 240V - 15A at 347V, 600V
KIT-OPP-TB2-AV ^{1,3}	TB2AV ^{1,3}	275.00	Double-pole tamperproof thermostat: 30A at 120V, 208V, 240V - 15A at 347V, 600V
KIT-OPP-TRIAC-347 ¹	TRIAC ¹	133.00	Single-pole electronic relay, coil 24V, without transformer, 10A max. at 347V max.
KIT-OPP-TRIAC-347T ¹	TRIACT ¹	191.00	Single-pole electronic relay, coil 24V, with transformer, 10A max. at 208V, 240V, 347V
KIT-OPP-TRIAC-600 ¹	TRIAC ¹	251.00	Single-pole electronic relay, coil 24V, without transformer, 6A at 600V max.

* For factory installed options, add the option number to the product number. See the **Product Code** section inside the front cover.

¹ Options installed at right end only.

² These 2-wire relays with transformer can't supply low voltage thermostats.

³ "Off" position.

Add "BL" for white, "AM" for almond. Upcharge available for optional colors shown in the color chart section.

Patio Door

