

# User's guide

OTH2750 (2750 W @ 240 VAC)

OTH4000 (4000 W @ 240 VAC)

OTH5007 (5000 W @ 347 VAC)

Non-programmable thermostat



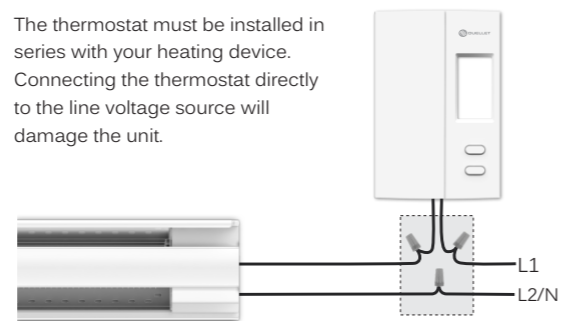
## Warnings

The installation of this thermostat should be made by a certified electrician and must be installed in conformity with the national and local Electrical Codes.



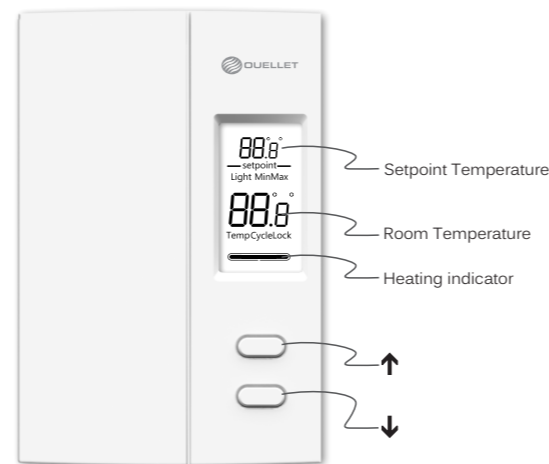
Since you are a valuable customer, before starting the installation of your new thermostat, please make sure that the breakers for your heating system are off at the main electrical panel!

The thermostat must be installed in series with your heating device. Connecting the thermostat directly to the line voltage source will damage the unit.

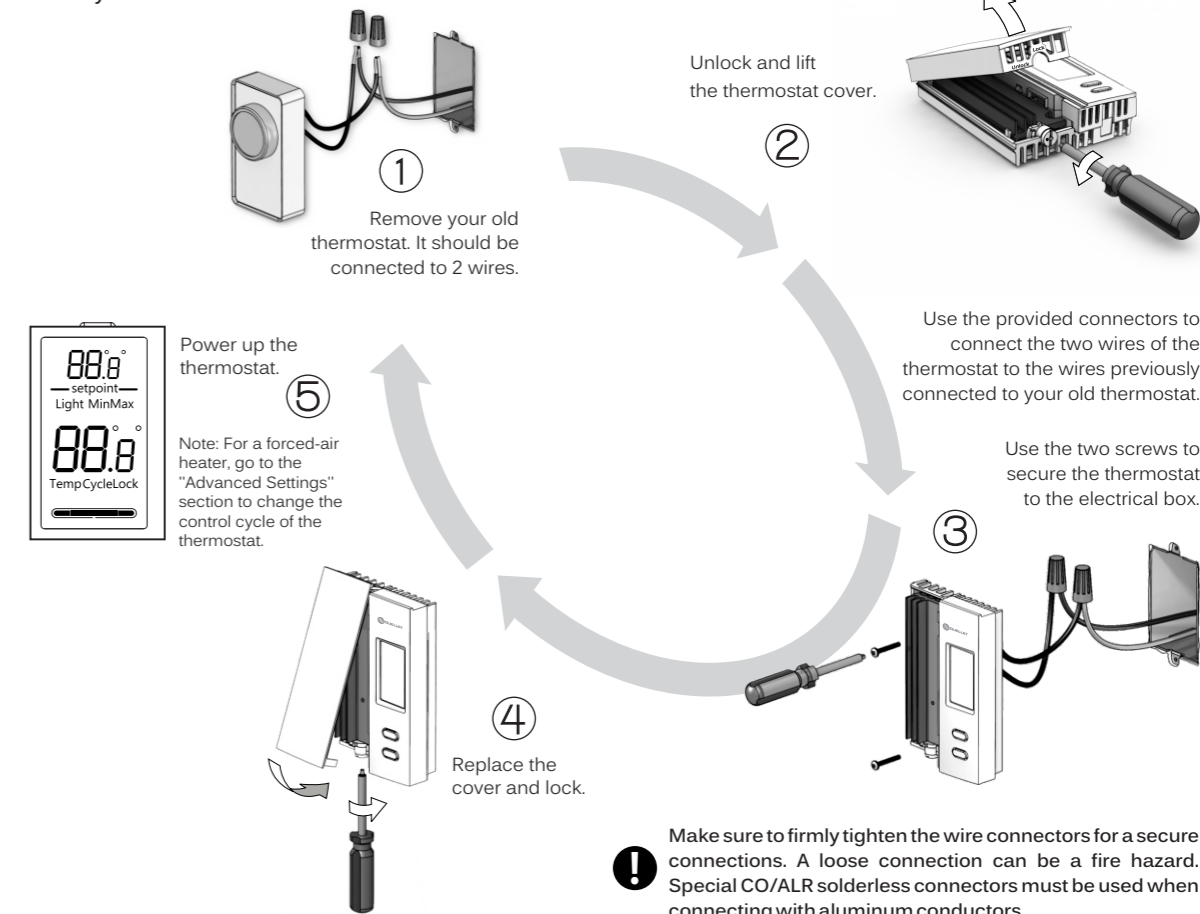


**Note:** The wires of this thermostat are non-polarized.

## Your thermostat OTH2750 / OTH4000 / OTH5007



## Install your thermostat



### Advanced Settings

Get the setpoint to its minimum and hold the ↓ button for 3 seconds to access the menu.



Press the ↑ or ↓ button to change the setting.

Press the ↑ and ↓ button to select the next parameter.

Press and hold the ↑ and ↓ button for 3 seconds to exit the menu and return to normal display.

Order	Parameters & settings	Display
1	<b>Temperature format</b> °C or °F (default: °C)	OC Temp
2	<b>Backlight</b> OFF (active for 6 seconds if a button is pressed) / ON (always active) (default: OFF)	Light OFF
3	<b>Minimum setpoint</b> 5 °C - 30 °C (41 °F - 86 °F) (default: 5 °C)	Min 5.0°
4	<b>Maximum setpoint</b> 5 °C - 30 °C (41 °F - 86 °F) (default: 30 °C)	Max 30.0°
5	<b>Cycle length</b> SHT (short cycle for electric baseboard) / FAN (long cycle for forced-air heater) (default: SHT)	Sht Cycle
6	<b>Keypad lock</b> OFF / ON (default: OFF)	OFF Lock

### Technical specifications

**Setpoint range:** 5 °C to 30 °C (41 °F to 86 °F)  
**Display range:** 0 °C to 70 °C (32 °F to 158 °F)  
**Resolution:** ± 0.5 °C (± 1 °F)  
**Storage:** -20 °C to 50 °C (-4 °F to 122 °F)

#### Thermostat OTH2750

**Maximum load:** 11.5 A / 1380 W @ 120 VAC, 50/60 Hz  
11.5 A / 2390 W @ 208 VAC, 50/60 Hz  
11.5 A / 2750 W @ 240 VAC, 50/60 Hz

**Minimum load:** 1.25 A / 150 W @ 120 VAC, 50/60 Hz  
1.25 A / 260 W @ 208 VAC, 50/60 Hz  
1.25 A / 300 W @ 240 VAC, 50/60 Hz

#### Thermostat OTH4000

**Maximum load:** 16.7 A / 2000 W @ 120 VAC, 50/60 Hz  
16.7 A / 3465 W @ 208 VAC, 50/60 Hz  
16.7 A / 4000 W @ 240 VAC, 50/60 Hz

**Minimum load:** 1.25 A / 150 W @ 120 VAC, 50/60 Hz  
1.25 A / 260 W @ 208 VAC, 50/60 Hz  
1.25 A / 300 W @ 240 VAC, 50/60 Hz

#### Thermostat OTH5007

**Maximum load:** 14.4 A / 4000 W @ 277 VAC, 50/60 Hz  
14.4 A / 5000 W @ 347 VAC, 50/60 Hz

**Minimum load:** 1.25 A / 346 W @ 277 VAC, 50/60 Hz  
1.25 A / 434 W @ 347 VAC, 50/60 Hz

Compatible with an electric heating system such as:

- Baseboard heater
- Convector (short cycle)
- Forced-air heater (long cycle)

### 3-year limited warranty

OUELLET CANADA INC. warrants the components of the OTH2750, OTH4000 & OTH5007 against defects in material and workmanship for a 3 year period from the date of purchase, under normal use and service, when proof of purchase of such is provided to the manufacturer. This warranty does not cover any transportation costs that may be incurred by the consumer. The obligation of Ouellet Canada Inc., under the terms of this warranty, will be to supply a new unit and this releases the manufacturer from paying the installation costs or other secondary charges linked to replacing the unit or the components.



If you have any questions on these products, call our technical support team at:

180, 3e Avenue, L'Islet (Quebec) G0R 2C0 CANADA  
Phone : 1 800 463-7043 · (418) 247-3947  
Fax : 1 800 662-7801 · (418) 247-7801  
www.ouellet.com · info@ouellet.com