



Owner's Guide

TH401

Non-programmable Thermostat



69-2550EFS-01



Need Help?

We are here to help. Call 1-800-831-2823.

Table of contents

About your new thermostat	1
Temperature display and setting	2
Removing the faceplate.....	3
Wiring	4
Installing the faceplate.....	5
Setup procedure.....	6
Setup menu	7
In case of difficulty	8
Specifications	9
Warranty.....	10
Customer assistance.....	11

About your new thermostat

This thermostat can be used to control an electric heating system such as a baseboard heater, a radiant floor, a radiant ceiling, a convector or a fan-forced heater.

The thermostat **CANNOT** be used with:

- a resistive load under 0.83 A
- a resistive load over 10.4 A
- a system driven by a contactor or a relay (inductive load)
- a central heating system

SUPPLIED PARTS

- One (1) thermostat
- Two (2) 6-32 mounting screws
- Two (2) solderless connectors

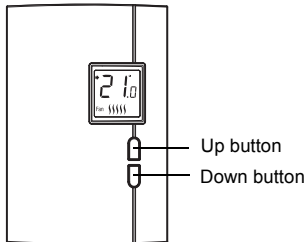
Temperature display and setting

Appears when the setpoint is displayed

Temperature display

Appears when the thermostat is configured for 5-minute cycles. The thermostat must be set to this configuration if it is controlling a fan-forced heater.

Heating intensity indicator.
(No image appears when heating is off.)



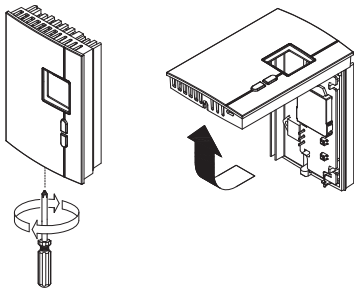
The thermostat normally displays the actual (ambient) temperature.

- To view the setpoint temperature, briefly press the **Up** or **Down** button. The setpoint will be displayed for 5 seconds and the screen illuminated for 12 seconds.
- To change the setpoint temperature, press the **Up** or **Down** button until the desired value is displayed.

Removing the faceplate

TURN OFF POWER OF THE HEATING SYSTEM AT THE MAIN POWER PANEL TO AVOID ELECTRIC SHOCK.

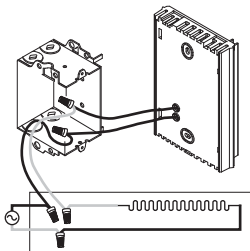
Loosen the screw holding the faceplate to the base. The screw cannot be completely removed and remains captive on the base. Remove the faceplate from the base by pulling the bottom half.



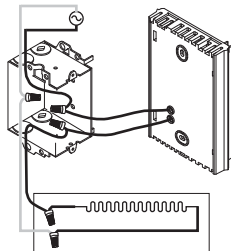
Wiring

Connect any one of thermostat wires to the heater (load) wire and the other one to the power supply wire using solderless connectors for copper wires. (The thermostat wires are non-polarized; either wire can be connected to the load or to the power supply.)

2-wire installation



4-wire installation



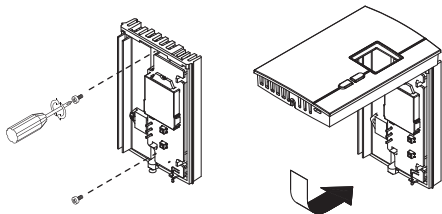
NOTE: All cables and connections must conform to the local electrical code. Special CO/ALR solderless connectors must be used when connecting with aluminium conductors.

Installing the faceplate

Install the base onto an electrical box.

Reinstall the faceplate on the base and secure it in place with the screw.

NOTE: Keep the air vents of thermostat clean and unobstructed at all times.




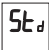


Setup procedure

The setup menu is shown on the following page.

- 1 Press the **Up** and **Down** buttons simultaneously for three seconds to enter the setup menu.
- 2 Press the **Up** or **Down** button to change the option.
- 3 Press the **Up** and **Down** buttons simultaneously for one second to advance to the next parameter.
- 4 When the last parameter is displayed, press the **Up** and **Down** buttons for three seconds to save any changes and exit the menu.

NOTE: *If you do not press any button for one minute, the thermostat will automatically save any changes you have made and will then return to its normal display.*

Setup menu

Parameter	Options	Display and default setting
Temperature display format	<ul style="list-style-type: none"> • °C • °F 	
Heating cycle	<ul style="list-style-type: none"> • Std (conventional heating): 15 seconds • Fan (fan-forced heating): 5 minutes 	
Minimum setpoint	5°C - 20°C (41°F - 68°F)	
Maximum setpoint	15°C - 30°C (59°F - 86°F)	

In case of difficulty

PROBLEM	SOLUTIONS
Thermostat is hot.	This is normal.
Displayed temperature is wrong.	Remediate if any the following conditions exists: <ul style="list-style-type: none"> • The thermostat is exposed to air draft. • The sticker on the thermostat's screen has not been removed. • The thermostat is located near or above a heat source such as a light dimmer.
Display disappears and reappears after a few minutes.	The thermal protection device on the heater has temporarily opened. This can happen if the heater is obstructed by furniture or curtain and has overheated, or if the heater's thermal protection device is too sensitive.

Specifications

- **Supply:** 120/240 VAC, 60 Hz
- **Minimum load:** 0.83 A (resistive only)
200 W @ 240 VAC
100 W @ 120 VAC
- **Maximum load:** 10.4 A (resistive only)
2500 W @ 240 VAC
1250 W @ 120 VAC
- **Display range:** 0°C to 50°C (32°F to 122°F)
- **Setpoint range:** 5°C to 30°C (41°F to 86°F)
- **Storage:** -20°C to 50°C (-4°F to 120°F)
- **Heating cycle length:** 15 seconds / 5 minutes (user-selectable)
- **Permanent memory:** You do not need to adjust the temperature following a power outage.

Warranty

Honeywell warrants this product, excluding battery, to be free from defects in the workmanship or materials, under normal use and service, for a period of three (3) years from the date of purchase by the consumer. If at any time during the warranty period the product is determined to be defective or malfunctions, Honeywell shall repair or replace it (at Honeywell's option).

If the product is defective,

- (i) return it, with a bill of sale or other dated proof of purchase, to the place from which you purchased it, or
- (ii) contact Honeywell. Honeywell will make the determination whether the product should be returned, or whether a replacement product can be sent to you.

This warranty does not cover removal or reinstallation costs. This warranty shall not apply if it is shown by Honeywell that the defect or malfunction was caused by damage which occurred while the product was in the possession of a consumer.

Honeywell's sole responsibility shall be to repair or replace the product within the terms stated above. HONEYWELL SHALL NOT BE LIABLE FOR ANY LOSS OR DAMAGE OF ANY KIND, INCLUDING ANY INCIDENTAL OR CONSEQUENTIAL DAMAGES RESULTING, DIRECTLY OR INDIRECTLY, FROM ANY BREACH OF ANY WARRANTY, EXPRESS OR IMPLIED, OR ANY OTHER FAILURE OF THIS PRODUCT. Some provinces, states or regions do not allow the exclusion or limitation of incidental or consequential damages, so this limitation may not apply to you.

THIS WARRANTY IS THE ONLY EXPRESS WARRANTY HONEYWELL MAKES ON THIS PRODUCT. THE DURATION OF ANY IMPLIED WARRANTIES, INCLUDING THE WARRANTIES OF MERCHANTABILITY AND FITNESS FOR A PARTICULAR PURPOSE, IS HEREBY LIMITED TO THE THREE-YEAR DURATION OF THIS WARRANTY. Some provinces, states or regions do not allow limitations on how long an implied warranty lasts, so the above limitation may not apply to you.

This warranty gives you specific legal rights, and you may have other rights which vary from one province, state or region to another.

Customer assistance

If you have any questions about the product installation or operation, contact us at:

705 Montrichard
Saint-Jean-sur-Richelieu, Quebec
J2X 5K8
Canada

Tel.: 1-800-831-2823

Email: aube.service@honeywell.com

For more information on our products, go to
www.aubetech.com

Aube Technologies

705 Montrichard

Saint-Jean-sur-Richelieu, Quebec

J2X 5K8

Canada

1-800-831-2823

aube.service@honeywell.com

www.aubetech.com

69-2550EFS-01

2010-12-01

Printed in USA

VERIFIED



VÉRIFIÉ

Energy
Performance
Rendement
Énergétique



aube
technologies