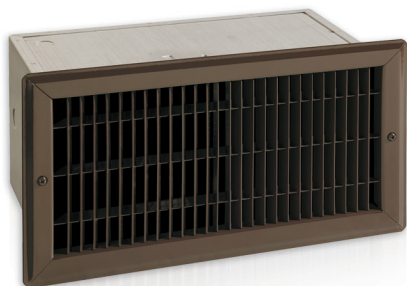


# OFH Floor Insert Fan Heater



## Features

### Color

- Standard: bronze, white, almond.
- Optional (upcharge applicable): metallic silver, metallic charcoal, aluminum, semi-gloss black, sand.
- Custom colors available upon request.

### Finish

- Standard: epoxy/polyester powder paint.

### Voltage

- 120V, 240/208V, 1-phase.

### Construction

- Welded 20-gauge steel.
- Sturdy floor grille (14-gauge).
- Protective screen keeps foreign objects from falling into the unit.
- High-limit temperature control with manual reset.

### Fan

- Large diameter, quiet fan operating at 43.9 dBA at 80 cfm.
- Factory-lubricated motor.

### Heating element

- Durable tubular heating element with fins.

### Installation

- Minimum clearance from adjacent walls: 6 in. (15.2 cm).
- Large wiring compartment.

### Warranty

- 5-year warranty against defects.

### Application

- Bay window, near patio door.

*Note: If an electronic thermostat is used, it must be compatible with forced-air heaters.*

## Models

Watts	Volts	Product #	Price	Weight	
				lb	kg
500	120	OFH0502	752.00	16.0	7.3
1000	120	OFH1002	776.00	16.0	7.3
1500	120	OFH1502	790.00	16.0	7.3
500/375	240/208	OFH0500	752.00	16.0	7.3
1000/750	240/208	OFH1000	776.00	16.0	7.3
1500/1125	240/208	OFH1500	790.00	16.0	7.3

Add "BZ" for bronze, "BL" for white, "AM" for almond.  
Upcharge available for optional colors shown in the color chart section.

